

GETTING STARTED

The Art Trail provides an opportunity for parents and guardians with kids to take a closer look at selected artworks, start conversations about art, and enjoy creating images in response to the methods and themes discussed.

YOU WILL NEED

Grey lead pencil
Coloured Pencils (optional)
Sheet/s of white paper (optional)

THE EXHIBITION

LRG is situated in Morwell in the Latrobe Valley of Victoria, home to the major electricity generating plants of Hazelwood, Yallourn and Loy Yang.

Unsurprisingly our collection has a strong emphasis on power generation, industry and the employment of natural resources.

Here are just a few examples of artworks from our collection that elaborate on this theme.



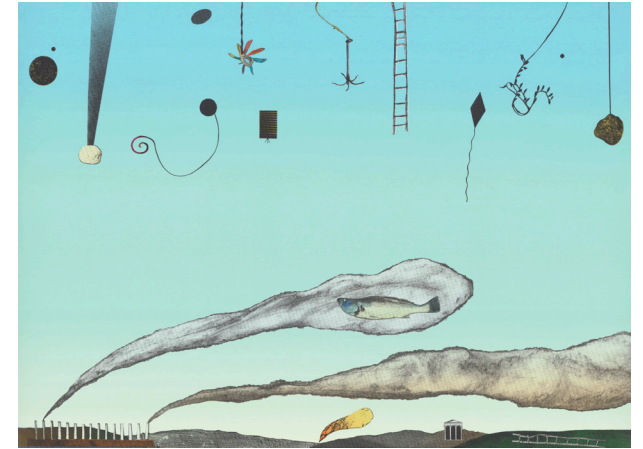
**LATROBE
REGIONAL
GALLERY**
...

138 Commercial Rd, Morwell, Victoria, Australia 3840
www.latroberegionalgallery.com

(03) 5128 5700
lrg@latrobe.vic.gov.au

All details correct at time of printing

Latrobe Regional Gallery is Located on the traditional land of the Braiakaulung people of the Gunaikurnai nation. We pay respects to their Elders-past and present.



LRG COLLECTION

INDUSTRY

LRG Online Collection

COVER IMAGE

Danny McDonald, *Malloway Math of it* 1992.
Screenprint, 74 x 105cm. Latrobe Regional
Gallery Collection.



Latrobe Regional Gallery's Education and Public Programs are generously supported by Australian Paper



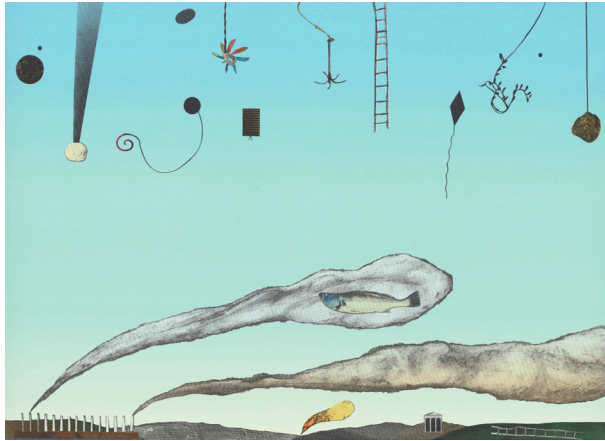


Image Credit: Danny McDonald, *Mulloway Math of it* 1992. Screenprint, 74 x 105cm. Latrobe Regional Gallery Collection.

View Danny McDonald's artwork *Mulloway Math of it*. What objects can you see?

Danny McDonald uses personal symbols to talk about mankind and the environment in this artwork. What do you think these symbols represent?

Create a landscape using your own personal symbols:

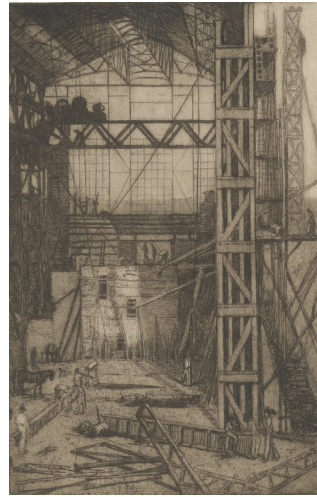


Image Credit: Jessie Traill, *Meccano House*, 1923. Drypoint etching, 34 x 23cm. Latrobe Regional Gallery Collection.

View Jessie Traill's artwork *Meccano House*. What do you think has happened in this building?

Jessie Traill created artworks that showed the changing landscape of Gippsland, from bush to industry. Why do you think this was important to her?

Draw a place you have seen change over time:



Image Credit: Ethel Spowers, *The Works, Yallourn*, 1933. Linocut 16 x 34cm plate. Latrobe Regional Gallery collection

View Ethel Spowers artwork *The Works, Yallourn*. What do you think the people doing?

Ethel Spowers used very modern, bold colours and shapes to create her lino cuts. How does that affect the way you feel when looking at this artwork?

Draw a building using very bold colours and shapes: