



LATROBE REGIONAL GALLERY

138 Commercial Road Morwell Vic 3840

03 5128 5700

lrg@latrobe.vic.gov.au

latroberegionalgallery.com

Open Daily: 10am - 4pm

FREE ENTRY

Low Sensory Hours:

Daily 10 - 11am

and 3 - 4pm

Follow us:



[/latroberegionalgallery](https://www.facebook.com/latroberegionalgallery)

Latrobe Regional Gallery is located on the traditional land of the Brayakaulung people of the Gunaikurnai nation. We pay respects to their Elders past, present and emerging.



Winter 2023



Welcome

This winter, enjoy a dynamic, rich and thought-provoking series of exhibitions and creative experiences. The exhibitions traverse ideas including collectivity, the spiritual, existentialism, psychological and bodily responses to environment, and the forest as an enduring source of inspiration to artists.

Through the public programs, Latrobe Regional Gallery offers several opportunities for workshops facilitated by artists, engaging both kids and adults with hands-on activities and a chance to explore diverse techniques and approaches.

There are also exciting projects to explore beyond the gallery space, as LRG seeks to activate the gallery in new and different ways. Read on to learn more about what your next visit to the gallery might entail!



IMAGE: John Olsen, *Spoonbills*, 1973, lithograph print on paper, edition 1/25, 57.1 x 75.8 cm, LRG Collection (detail)

COVER IMAGE: Janina Green, *Untitled (From the plantation series)*, 1996, silver gelatin print, 84 x 103cm framed, LRG Collection

The Portal

The Portal is a re-introduced programable space at Latrobe Regional Gallery, which focuses on the moving image and projection.

Now showing – 30 July

Owls of Nebraska, *Exact Space*, 2016, stop frame animation with sound, duration 7.22 minutes, LRG Collection

31 July – 15 October

Barry Brown and Irene Proebsting, *Field*, 1997, super 8mm displayed on digital video format, colour, sound, duration 6 minutes, LRG Collection

Non-Spaces

Latrobe Regional Gallery is excited to introduce Non-Spaces, a series of exhibits, which utilise the non-gallery spaces of LRG to engage and guide the gallery goer to explore new parts of the site, with unexpected artistic offerings along their path.

This season, enjoy a small exhibition of prints curated to honour the late John Olsen (21 January 1928 – 11 April 2023) as the iconic Australian artist whose energetic paintings celebrate the rich landscape of this country.

LRG x GPAC

Starting this autumn, Latrobe Regional Gallery is partnering with the Gippsland Performing Arts Centre to showcase the best works from the LRG Collection and works by invited artists in the public spaces of GPAC.

Now showing – 6 August

First Act: Satellite Exhibition

12 August – 15 October

Self @ 12: a solo exhibition by John Mutsaers



Ensemble Dutala, ILBIJERRI Theatre Company, Kaiela Arts, Koorroyarr, Latje Latje Dance Group Mildura, Mitch Mahoney and this mob, Pitcha Makin Fellas, Possum Skin Cloak Story, Ray Thomas and The Torch, and We Iri, We Homeborn—Aboriginal and Torres Strait Islander Arts Festival

5 August - 22 October | Gallery 1 & 2

Collective Movements: First Nations Collectives, Collaborations and Creative Practices from across Victoria is a wide-ranging project focusing on the work of historic and contemporary First Nations creative practitioners and community groups from across Victoria that recognises collectivity as integral to Indigenous knowledges and ways of being. An exhibition, publishing project, conversation and workshop platform, the project begins with the desire to make more visible a language and terminology beyond Western art concepts of 'collaboration' and 'collectivism'—one that better describes and acknowledges the way Indigenous creatives work within a broader community and its inheritances.

Collective Movements is a MUMA / NETS Victoria touring exhibition, curated by Kate ten Buuren, Maya Hodge and N'Arweet Professor Carolyn Briggs AM PhD with advice from Professor Brian Martin. This project has been supported by the Victorian Government through Creative Victoria and the Australian Government through the Australia Council for the Arts.

IMAGE: Latje Latje Dance Group Mildura, *Latje Latje Dance Group Mildura T-shirt*, designed by Peter Clarke, Courtesy of Aaron Clarke, Installation view, *Collective Movements*, Monash University Museum of Art, Melbourne, 2022, Photo: Christian Capurro

Collective Movements identity designed by Jenna Lee

Exhibition partners

Exhibition supporters





SPECTRAL SEA

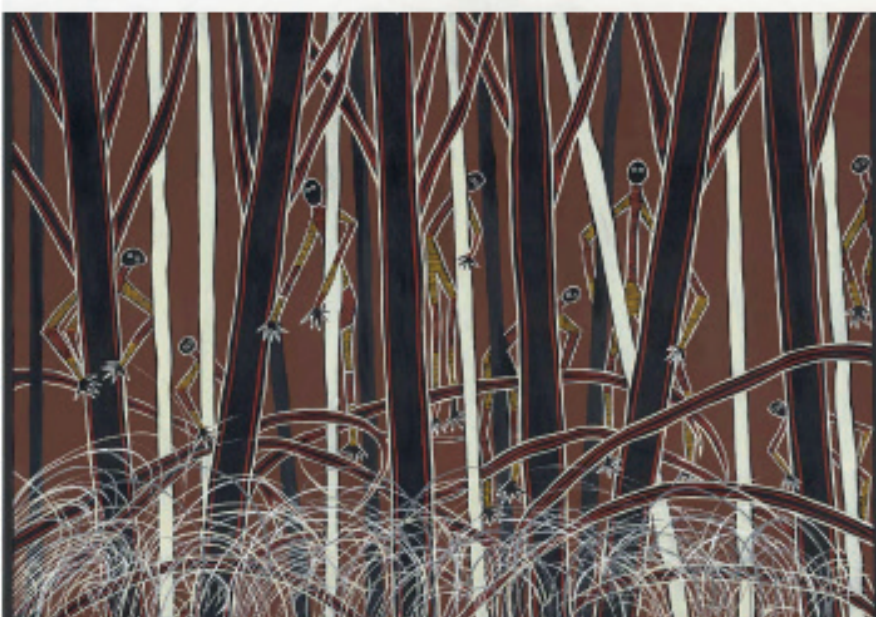
Kim McDonald

17 June - 17 September
Gallery 4

Spectral Sea is a solo exhibition by Kim McDonald, whose work is made through exploratory printmaking processes. Showcasing a series of subtle prints paired with a work spanning several metres, the exhibition features deep hues and mark-making that is highly expressive. It is a personal response to the oceanic environment of McDonald's home surroundings.

Harnessing psychological and physical states to create the work, McDonald exercises body memory and touch, affecting the pressure of the ink transferred from copper to paper. For the artist, this is both a performative and reflective process, ingrained with elements of the sea. The prints take on their own nature; they become akin to ghosts of what has been seen, heard and experienced. They become a *Spectral Sea*.

IMAGE: Kim McDonald, *Untitled*, monoprint on rice paper, 2021, with performers Samara Cunningham and Jessica Murray, photo credit Karli Duckett (install shot)



A FOREST

Ros Atkins, John Bellany, Juan Ford, Janina Green, Eileen Harrison, John Ford Patterson, Bob Pelchen, Pezaloom, Susan Purdy, Dean Smith, Polly Stanton, Sophia Szilagyi, Peter Whitting, John Wolseley

17 June - 17 September
Gallery 5 & 6

This exhibition combines works from the Latrobe Regional Gallery Collection with works by invited artists, which contemplate the forest landscape.

The forest is a landscape loaded with symbolism that has been commonly referenced throughout history in art and literature. From popular fiction to traditional fairy tales, the forest can represent the human psyche, the unknown, danger and magic - untameable and inhabited by strange and bewildering creatures. In other contexts, such as health and wellbeing, the forest is often promoted as a place to visit to reconnect with the natural environment. Forests are some of the most biodiverse places on Earth and a vital part of our ecosystem.

A Forest includes works that begin with these environments to touch on both narrative associations and ongoing discourse around climate and land use.

IMAGE: Dr Aunty Eileen Harrison (Gunaikurnai), *Den of Nargun - Spirit Tracks*, 2004, acrylic on paper, 185 x 102 cm framed, courtesy of the artist



OPEN CHANNELS

Kate Mitchell

5 August - 22 October
Gallery 3

Kate Mitchell is an artist whose work explores notions of magic and New Age practices, and how these intersect with themes of productivity, labour, success, and failure within contemporary society.

In this exhibition, viewers will encounter videos and a suite of ink works, which probe questions around existential concepts. Often approaching these ideas in a humorous, performative, or experimental way, Mitchell presents work that is multi-layered and invites the viewer to consider their own being and beliefs.

IMAGE: Kate Mitchell, *Taking out the karmic trash*, 2022, copic ink on paper, digital collage, digital print on archival watercolour paper, edition 1/1, 29.7cm x 42cm, courtesy of the artist (detail)

Creative Experiences

THE LANE: Fantasia Forest

Daily from 1 July

Children are invited to immerse themselves into a surreal forest wonderland, where time, scale and colour are manipulated to reveal the vagaries of perception and new ways of sensing the environment. Made in collaboration with sound artist, Mark Hooper, this iteration of The Lane invites young people on a voyage into an acoustic ecosystem, and through art activities, to become co-creators of this collaborative space.

PANEL DISCUSSION: Networks

Saturday 1 July, 2pm

Free, all welcome

Current artists exhibiting at LRG will convene for a discussion that delves into their practice as well as themes that intersect across exhibitions exploring connection and land from multiple perspectives. Local artist, Kate Zizys, will also be reciting a poem correlating to the concepts arising through her work in the exhibition Ape Trip.

Wear the Wild: Forest Creatures with Sarah Seahorse

Sunday 2 July, 11am – 4pm

\$12, materials included

Limited places, bookings essential

All ages, children must be accompanied by an adult

Join fabulous milliner and "trash troll", Sarah Seahorse to create a bespoke hat or headdress inspired by nature and the local environment.

This hands-on workshop engages skills such as design, flat pattern construction, decorative techniques, and choosing the right recycled and foraged materials for the project.

Suitable for anyone interested in fashion, costume, design, sculpture, nature, circus, drag, cosplay.

LRG KIDS: Ultraviolet Torch Detective Hunt

Daily, from 22 July

Free

Kids all ages are invited to become art detectives by arming themselves with UV torches to discover clues throughout the galleries. This is a magical mystery hunt, which encourages children to engage with the artworks and themes of the current exhibitions through interactive fun.

Contact the gallery to find out how to participate.

WINTER PROGRAM CELEBRATION

Friday 25 August, 6 – 8pm

Free, all welcome

Please join us to celebrate each exhibition on offer in the LRG program this winter. Experience the exhibitions in a lively atmosphere and refreshments in hand.

ARTIST TALK: Open Channels

Kate Mitchell

Saturday 26 August, 11am

Free, all welcome

A chance to hear Kate Mitchell talk about her practice and unpack the concepts underlying each work in the exhibition Open Channels. Following the talk, visitors will have the opportunity to ask questions in a Q&A session.

LRG LIVE: InPlay Projects

Saturday 9 September, 2pm

Free, all welcome

Genre-defying, experimental dance collective, InPlay Projects, respond to the emotive subtleties, bodily pressure and internal/external forces at work in Kim McDonald's exhibition Spectral Sea. Visual art and performance collide in this event, resulting in a unique and immersive activation of the exhibition and bringing the forces within the work to life.

InPlay are based in Naarm (Melbourne). Performers: Jasmine Susic, Alec Katsourakis, Vourneen Ni Cainin and Jareen Wee. Sound: Lee Wheeler

PROFESSIONAL PRACTICE: Oil Painting Masterclass with Jacqui Stockdale

Saturday 19 August and Sunday 20 August, 10am – 4pm

\$80, bookings essential

Ages 17+

Be inspired by artist Jacqui Stockdale's use of masquerade, symbols and staged scenes in this two-day oil painting workshop. Combining still life, installation, and photographic strategies, participants will transform their painting.

Please bring along a significant object to add to the still life offering.

Materials are provided, but artists are welcome to bring their own. Places are limited, and bookings are essential. A limited number of subsidised places are available. Please contact the gallery if you require a subsidised place.

School Holidays

ALEBRIJE SCULPTURE AND PAINTING WORKSHOPS

Session 1: Saturday 24 June

Session 2: Saturday 1 July

Session 3: Saturday 8 July

11am – 3pm

Free, bookings advised

Ages 6+

Alebrijes are colourful painted Mexican sculptures depicting a wild and fantastic menagerie of animals. Over three sessions, learn how to use everyday recycled materials to make your own colourful alebrije. Materials are provided and all artists will take home a finished animal embodiment of their imagination.

MONOPRINT PLAYTIME WITH KIM MCDONALD

Saturday 8 July, 11am – 3pm

\$20, materials included, bookings essential

Join Kim for a mono-printing play date, exploring the possibilities of the technique in a fun and experimental environment.

Participants will discover the delights of printmaking that can be replicated in a home environment, playing with processes and inhabiting the ambiguity of the medium in prelude to the surprise of the reveal.