

Autumn 2024

lrg
LATROBE
REGIONAL
GALLERY
...







WELCOME

Acknowledgement of Traditional Owners

We acknowledge the Traditional Custodians of the land, the Brayakaulung people of the Gunaikurnai Nation. We pay our respects to their Elders past, present and emerging.

Welcome to the Autumn Program

Do we shut the doors? Do we shut our eyes? Wait? Do we live with what is or do we look within and open our eyes, look forward, see, reach for, change, and shape a future, the future? These are questions and ponderings that are central to our time: this time. This Season we welcome not only you, but opportunities to showcase exciting new works, our community, and to consider and explore what shapes us and what lies ahead.

At the forefront of this Season are exhibitions officially programmed as part of the PHOTO 2024 International Festival of Photography (photo.org.au), a major biennial of new photography and ideas taking place from 01–24 March in Melbourne and regional Victoria. Responding to the theme 'The Future Is Shaped by Those Who Can See It', PHOTO 2024's expansive program invites audiences to discover the possible and parallel futures that lie ahead, and how current actions and activism are shaping future realities. PHOTO 2024 is produced by PHOTO Australia in collaboration with cultural institutions, museums and galleries, and education, industry and government partners.

This Season how we see and shape ourselves and our future realities is given space in workshops, talks and participatory experiences. From capturing our present reality with photography or creating alternative ones with fairy tales, to forming a new one with making, to activating those within, or immersing ourselves in those of others, there are explorative offerings everywhere and there is something for everyone.

IMAGE COVER: Anne Moffat, *Cows at Morwell Terminal Station (detail)*, Morwell, 2023.

IMAGE LEFT: Gareth Phillips, *Pin Valley, Himalaya (detail)*, 2017, from the series *Interstates of Becoming*. Dimensions variable. Courtesy the artist.

PHOTO 2024
International Festival
of Photography

CONTENTS

pg. **EXHIBITIONS**

4	The Valley - Clare Steele, Andy Johnson, Anne Moffat, James Bugg	1 March – 23 June
5	Interstates of Becoming - Gareth Phillipps	1 March – 23 June
6	Selected Works - Yarema Malashchuk and Roman Khimei	12 February – 26 May
7	The Quickening – Ying Ang	12 February – 26 May
8	No More Flags – MacDonaldStrand	12 February – 26 May
9	The Lane: In the Clouds	8 March – 23 June

pg. **WORKSHOPS & EXPERIENCES**

10	TALK: Motherhood – Ying Ang and invited guests	8 March
10	EVENT: Season Celebration	8 March
11	WORKSHOP: Practicing Connections in Movement – An Introduction to Klein Technique™	9 March
11	WORKSHOP: Life Drawing Sessions	14 March – 2 May
12	WORKSHOP: Photography with Reusable Film Cameras	13 April
12	WORKSHOP: Portraiture on Film	18 and 25 May
13	TALK: Hillvale on The Valley	19 May
13	TALK: Sydney Writers' Festival, Live Stream	23 – 26 May

pg. **WHAT'S ON AT GIPPSLAND PERFORMING ARTS CENTRE**

14	Practicing Connections in Movement	9 March
14	Southern Sons	9 March
14	Snowy and the Seven Cool Dudes	9 April
14	Gems of Jazz	18 April
15	NEWK – The John Newcombe Story	27 April
15	Tash York's Happy Hour	25 May

pg. **KIDS: SCHOOL HOLIDAY FUN**

16	MAKE: Collaged Tote Bags	<i>13 April</i>
16	MAKE: Mosaic Photo Frames with Dried Beans!	<i>20 April</i>
17	Workshop: Fractured Fairytales	<i>9 April</i>
19	Workshop: Comedy and Clowning	<i>10 April</i>

pg. **SATELLITE EXHIBITIONS**

20	Selected Works – John Bellany	<i>9 February – 8 April</i>
20	Legends of the Torres Straits - Brian Robinson	<i>17 May – 26 July</i>
21	Latrobe City Art Salon	<i>17 May – 28 July</i>

pg. **GUIDED TOURS**

22	Private Tours
22	Education Tours

23 **LRG SHOP**

23 **VENUE HIRE**

24 **VOLUNTEERING AND MEMBERSHIPS AT LRG**

25 **VISIT US**

EXHIBITIONS



THE VALLEY

James Bugg, Andy Johnson, Anne Moffat, Clare Steele

1 March – 23 June

Latrobe Regional Gallery, Galleries 1 & 2

The Valley presents a body of work captured by four artists who have developed their photographic practices closely with local Melbourne gallery and photo lab, Hillvale - James Bugg, Anne Moffat, Clare Steele and Hillvale Photo co-founder, Andy Johnson. At the invitation of LRG, they visited the Latrobe Valley over a six-month period. They were introduced to the community and the people and places that inhabit this rugged landscape made up of heavy industry and pastoralism.

This image-making project is also an ongoing collaboration, as the photographers lead a series of workshops using Hillvale Photo's recycled disposables, starting with local young people from Kurnai College's Flexible Learning Option, and continuing over the Autumn season, with participants' work displayed alongside the artists.

The Valley is an official exhibition of PHOTO 2024 International Festival of Photography.

IMAGE: Andy Johnson, *LV Field Nats (detail)*, 2023. Courtesy the artist.

**HILLVALE
PHOTO**

THIRDS
FINEART
PRINTING

ILFORD

PHOTO 2024
Official Exhibition



INTERSTATES OF BECOMING

Gareth Phillips

1 March – 23 June

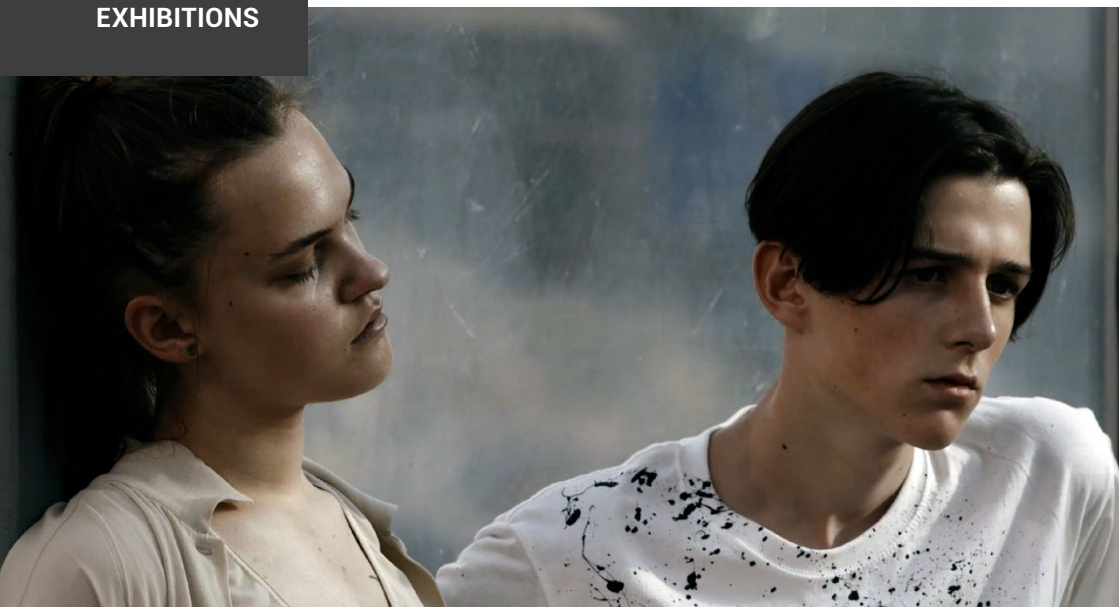
Latrobe Regional Gallery, Gallery 3

A world premiere by acclaimed Welsh artist Gareth Phillips on the occasion of PHOTO2024 International Festival of Photography, *Interstates of Becoming* is about the relationship between human beings and their shared environments, focusing specifically on the Himalayan mountains of Northwest India. Wild environment and human construction grapple for superiority and control amidst concrete, steel, immense rockfaces and mountainscapes. Using this unique and fragile landscape, a constructed photobook sculpture and large-scale installation depicts the direct and indirect effects humans and mountains have on each other, as they embark on interdependent life-spans.

Interstates of Becoming is an official exhibition of PHOTO 2024 International Festival of Photography.

IMAGE: Gareth Phillips, *Untitled*, from the series *Interstates of Becoming* (detail), 2023. Courtesy the artist.

PHOTO 2024
Official Exhibition



SELECTED WORKS

Yarema & Himey

12 February – 26 May

Latrobe Regional Gallery, Gallery 4

Kyiv-based artists and filmmakers Roman Khimei and Yarema Malashchuk have been collaborating at the boundaries of visual art and cinema since 2013. Their work engages with imperialist mythologies, youth, nostalgia and Soviet legacies. This exhibition is a brief survey of the duo's work to date.

Selected Works features the film *Dedicated to the Youth of the World II* (2019) documenting *Cxema*, the biggest techno-rave in Ukraine. The exhibition also features the new work *Explosions Near the Museum* (2023), produced from the war zone, in a museum in the city of Kherson.

Selected Works is an official exhibition of PHOTO 2024 International Festival of Photography.

IMAGE: Yarema & Himey (Yarema Malashchuk and Roman Khimei) *Dedicated to the Youth of the World II* (still) 2019, 4K video, sound, 9 minutes. Courtesy the artists.

PHOTO 2024
Official Exhibition



THE QUICKENING

Ying Ang

12 February – 26 May

Latrobe Regional Gallery, Gallery 5

The beginning of matrescence (the process of becoming a mother) begins as a kind of black magic curiosity—movement under the skin, growing and forming at will, the hurricane of birth, the electricity of the let down.

The Quickenings explores the transformation and lived experience of a woman in her motherhood/matrescence and postpartum depression/anxiety. The work interrogates the under-represented transition of biological, psychological and social identity during a complex and yet ubiquitous phase of life. *The Quickenings* traverses the sudden landslide of one woman's known world and the subsequent moving through rubble as devastated and in love, she tries to make sense of what is left, and ends with a slow rebuild of the new territory of becoming a mother.

A Centre for Contemporary Photography touring exhibition.

The Quickenings is an official exhibition of PHOTO 2024 International Festival of Photography.

IMAGE: Ying Ang, *Untitled from the series The Quickenings (detail)*, 2019.

PHOTO 2024
Official Exhibition

CENTRE FOR
CONTEMPORARY
PHOTOGRAPHY



NO MORE FLAGS

MacDonaldStrand

12 February – 26 May

Latrobe Regional Gallery, Gallery 6

Working collectively as MacDonaldStrand, Clare Strand and Gordon MacDonald make work in response to photographic history, politics and practice. *No More Flags* is an ongoing project made up of photographs of extreme right-wing marches in the UK and USA. In each image, the flags have been crudely removed from the images to withdraw the asserted legitimacy of these marches as being for the benefit of national identity. By taking the flags away from these nationalists, MacDonaldStrand remove the symbols that they rely on to spread their message. The resulting images show remarkably similar protagonists marching with blank flags, raising questions about the type of society we want to be promoting and striving for.

Presented in partnership with PHOTO Australia.

No More Flags is an official exhibition of PHOTO 2024 International Festival of Photography.

IMAGE: MacDonald Strand, *Untitled*, from the series *No More Flags* (detail), 2021-. Courtesy the artists.

PHOTO 2024
Official Exhibition



THE LANE: IN THE CLOUDS

8 March – 23 June

Latrobe Regional Gallery

Come and explore The Lane – our space dedicated to creativity for kids! This Autumn, view things from a new height. You'll be up in the atmosphere!

When you're in the clouds, you'll be dreaming up new things, envisioning possibilities for the future and exploring with the tools around you to see things differently.

All the activities in The Lane are free and available to do daily – all you need is to bring your imagination and curiosity with you!

NOTE: Hey grown ups! We love people of all ages having fun with the activities here, so feel free to have a go too! Please make sure children are supervised at all times.

IMAGE: Ying Ang, *Untitled* from the series *The Quickenings* (detail), 2019.



WORKSHOPS & EXPERIENCES



TALK: MOTHERHOOD

Ying Ang and invited guests

Friday 8 March, 4.30pm – 5.30pm

Latrobe Regional Gallery, Gallery 5

Free, all welcome

Exhibiting artist Ying Ang unpacks her experience of motherhood and the changes that come with matrescence, as explored in her exhibition *The Quickening*.

Ying will be joined by invited guests who have focused on the area of motherhood in their professional career, adding their insights to the conversation and delving deeper into the topic.

This event coincides with the official celebration for Latrobe Regional Gallery's Autumn exhibitions and International Women's Day.

Please register your interest in attending. Register by phone on 03 5128 5700 or email: lrg@latrobe.vic.gov.au

IMAGE: Ying Ang, *Untitled (detail)* from the series *The Quickening*, 2019.

EVENT: SEASON CELEBRATION

Friday 8 March, 6pm – 8pm

Latrobe Regional Gallery, Foyer

Free, all welcome

Please join us to celebrate and welcome to the Gallery, the exhibitions on offer this Autumn. This event provides an opportunity to explore, discuss and discover this Season's exhibitions in the company of artists, collaborators, family, and friends. We would love to see you there.

Light refreshments will be served.

Please register your interest in attending. Register by phone on 03 5128 5700 or email: lrg@latrobe.vic.gov.au



WORKSHOPS

WORKSHOP: PRACTICING CONNECTIONS IN MOVEMENT – AN INTRODUCTION TO KLEIN TECHNIQUE™

Alice Heyward

Saturday 9 March, 11am – 1.10pm

Gippsland Performing Arts Centre,
Town Hall Theatre

Ages: 18+

Full: \$20 | Concession: \$18 | Access: \$15

Let Alice Heyward guide you through the Klein Technique™, a process-oriented practice of immense value to people of all proficiency levels, dancers, and non-dancers alike. It aims to teach movement from the individual perspective of internal knowing and understanding.

To improve movement and reduce and heal injuries, Klein Technique™ focuses on moving from our deepest structural and energetic tissue, the bone, and the connections at the level of the bones.

Alice Heyward is dancer and works as a performer, choreographer, dramaturge, teacher, writer, and editor.

Limited places available. Bookings via gippslandpac.com.au

IMAGE: Courtesy of Diana Tinoco

WORKSHOP: LIFE DRAWING SESSIONS

Thursdays 14 March to 2 May, 5.30pm – 7.30pm

Latrobe Regional Gallery, Workshop

Ages: 18+

Full: \$25

Concessions: \$20 | Member: \$20

Life drawing sessions are back at Latrobe Regional Gallery this Autumn! These sessions are a great opportunity to practice your observational skills and drawing the human form. Many people also find life drawing relaxing, so this is a perfect way to unwind towards the end of the week whilst doing something creative!

The sessions running at LRG are safe, inclusive, and welcoming of all skill levels. Participants will need to bring their own paper and drawing materials.

Limited places available. Book by phone on 03 5128 5700 or email lrg@latrobe.vic.gov.au

IMAGE: Alan Sumner, *Untitled (detail)*, n.d. Oil on canvas, 45.5 x 35.5 cm, Latrobe Regional Gallery Collection, gift of the Alan Sumner Estate, 1995.



WORKSHOPS & EXPERIENCES



WORKSHOP: PHOTOGRAPHY WITH REUSABLE FILM CAMERAS

Clare Steel and Anne Moffat

Saturday 13 April, 12pm – 3pm

Latrobe Regional Gallery, Workshop

Full: \$30 | Concession: \$20 | Members: \$20

Join exhibiting artists Clare Steele and Anne Moffat of Hillvale as they take you through some approaches to film photography that you'll be able to try during this workshop.

Using a Hillvale re~di camera and 35mm film provided, each participant will get to create their own series of photos with the opportunity to learn tips from the artists.

Whether you are wanting to learn a new skill or looking for something fun to do with a friend or family member – you'll be sure to get some fabulous results no matter your skill level.

Following the workshop your photos will be developed by Hillvale and sent to you via email, and you'll also receive an additional 35mm camera to take home so you can keep going! All materials included.

Limited places available. Book by phone on 03 5128 5700 or email lrg@latrobe.vic.gov.au

This workshop is presented in partnership with Hillvale.

IMAGE: Clare Steele (detail), 2023



WORKSHOP: PORTRAITURE ON FILM

Clare Steele and Anne Moffat

Saturday 18 and 25 May, 10am – 1pm

Latrobe Regional Gallery, Workshop

Ages: 12 – 25

Free

Learn about making portrait photography with Hillvale photographers Clare Steele and Anne Moffat. You'll use Hillvale recycled disposable (re~di) cameras. The cameras will have 35mm colour film loaded to create fun portraits and self-portraits.

You'll get your own Hillvale re~di camera for the workshop. Hillvale will develop the pictures for you. They will send the photos through after the workshop via email. Plus, you'll get another re~di camera to use at home after the workshop.

Just a heads up: you will take photos of yourself and others, so you should feel okay being in front of and behind the camera. Our workshop is a safe and welcoming space, and it's important for everyone to help keep it that way.

IMAGE: Anne Moffat. *Lillian & her garden (detail)*, Yallourn, 2023.





TALK: HILLVALE ON THE VALLEY

James Bugg, Andy Johnson, Anne Moffat, and Clare Steele

Sunday 19 May, 2pm

Latrobe Regional Gallery, Galleries 1 & 2

Free, all welcome

Hear directly from Hillvale artists James Bugg, Andy Johnson, Anne Moffat and Clare Steele, who have developed a large body of work over several months in the Latrobe Valley.

Together their work captures not only the landscape but also the people, past and present of this place we call home.

Come along to learn about the makings of this major exhibition which celebrates our Valley and learn more about the communities and places in our own backyard. Following the talk there will be some light refreshments and a chance to chat with the artists.

Please register your interest in attending. Register by phone on 03 5128 5700 or email: lrg@latrobe.vic.gov.au

IMAGE: Clare Steele (detail), 2023, as part of the project *The Valley*.

TALK: SYDNEY WRITERS' FESTIVAL LIVE & LOCAL

Live Stream

Thursday 23 to Sunday 26 May,
10am – 4pm

Gippsland Performing Arts Centre,
Function Room 1

Free, all welcome

Join us for the Live & Local streaming program which brings the Sydney Writers' Festival to life in communities right across the country.

Prepare to be engaged by conversations, debates, and discussions, as the Festival brings the world's finest authors to you in real time.

Limited places available. Bookings via gippslandpac.com.au or on the day at the Box Office.

GIPPSLAND PERFORMING
ARTS CENTRE

LIVE THEATRE LIVES HERE

MAR
9

PRACTICING CONNECTION IN MOVEMENT

Tickets from \$15

MAR
9

SOUTHERN SONS LIVE IN CONCERT

Tickets \$75

APR
9

SNOWY AND THE SEVEN COOL DUDES

Tickets from \$9

APRIL
18

GEMS OF JAZZ

Tickets from \$13





APR
27

NEWK -
**THE JOHN NEWCOMBE
STORY**

Tickets from \$18

MAY
25

**TASH YORK'S
HAPPY HOUR**

Tickets from \$20

BOOK ONLINE

gippslandpac.com.au
32 Kay Street, Traralgon
5176 3333



KIDS: SCHOOL HOLIDAY FUN



MAKE: COLLAGED TOTE BAGS

Saturday 13 April, 10am – 11.30am

Latrobe Regional Gallery, Workshop

Ages: 4 – 10

Free

In this workshop you will be inspired by the possibilities of collage techniques and get to create your own photo collage to turn into a tote bag design!

Using a special transfer paper, we will press on your final design onto a tote bag to take home with you. This workshop will get you thinking about other ways you can use collage and is perfect for creating a unique library bag or personalised gift for someone.

Limited places available. Book by phone on 03 5128 5700 or email lrg@latrobe.vic.gov.au

MAKE: MOSAIC PHOTO FRAMES WITH DRIED BEANS!

Saturday 20 April, 10am – 12.30pm

Latrobe Regional Gallery, Workshop

Ages 6 – 14

Free

Paint and decorate a photo frame using a mosaic technique but with a twist! In this workshop we will be using dried beans and lentils to create a beautiful design for a special photo.

Use it at home to display a favourite memory or gift a loved one something handmade by you!

Limited places available. Book by phone on 03 5128 5700 or email lrg@latrobe.vic.gov.au

WORKSHOP: FRACTURED FAIRYTALES

Em Chandler

Tuesday 9 April, 1pm

Gippsland Performing Arts Centre, Town Hall Theatre

Ages: 5 – 8

Full: \$5 | Access: \$4.50

Come fracture, explore, and retell some classic fairy tales through kindness, wonder, and play! Let's use our imaginations, blankets, chairs, and all sorts of everyday objects to make troll bridges and little pig's houses! We can be sneaky Goldilocks and Big Bad Wolves with a colander hat or blanket cape. And what happens when we start to change the stories? Are there more than three billy goats gruff? What if they were superheros? An alien invasion, or pig fairy godmothers? Let's find out together.

Limited places available.

Bookings via gippslandpac.com.au





WORKSHOP: COMEDY AND CLOWNING

Kayla Hamill

Wednesday 3 April, 10am and 1pm

Gippsland Performing Arts Centre, Town Hall Theatre

Full: \$5 | Access: \$4.50

**Follow Your (Red) Nose! 10am
Ages 9 – 12**

Follow Your (Red) Nose! is a workshop designed especially for children of all abilities, social skills, introverts, and extroverts. Clowning is a serious business. Well, serious and loads of fun too. Each participant receives their own red nose, and through a series of carefully planned and inclusive games and activities, they will learn how to delight an audience, and each other, with generosity, adaptability, and kindness.

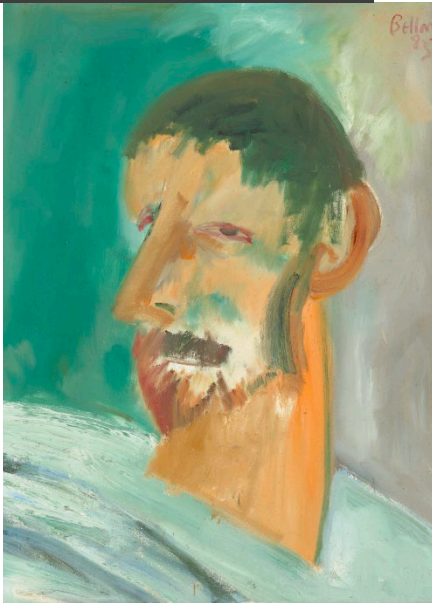
**Quirky Comedy Workshop, 1pm
Ages 13 – 17**

This specially designed workshop is for teenagers of all abilities and social skills, the outgoing and the introverted. That's because there's a whole lot more to comedy than meets the eye. Comedy can be a story, a character, a situation, or a combination of all these. Everyone has something unique to offer, and through a series of carefully planned and inclusive games and activities, you'll learn how to delight an audience, and each other, with your own brand of weirdness, generosity, adaptability, and kindness.

Limited places available. Bookings via gippslandpac.com.au

IMAGE LEFT: NGV Kids on Tour workshop. IMAGE ABOVE: Courtesy of Stu Brown.

SATELLITE EXHIBITIONS



LEGENDS OF THE TORRES STRAITS

Brian Robinson

17 May – 26 July

GPAC Little Theatre, Foyer

Artist Brian Robinson (b. 1973, Waiben, Queensland) is of the Kala Lagaw Ya and Wuthathi language groups of the Torres Strait. This selection of work from the Latrobe Regional Gallery's permanent collection by Robinson was printed and donated by local Gippsland printmaker Kate Zizys.

Image: Brian Robinson, *lian Mask II*, 2011, 71 x 101 cm framed. Latrobe Regional Gallery Collection, gift of Kate Zizys, 2017.

SELECTED WORKS

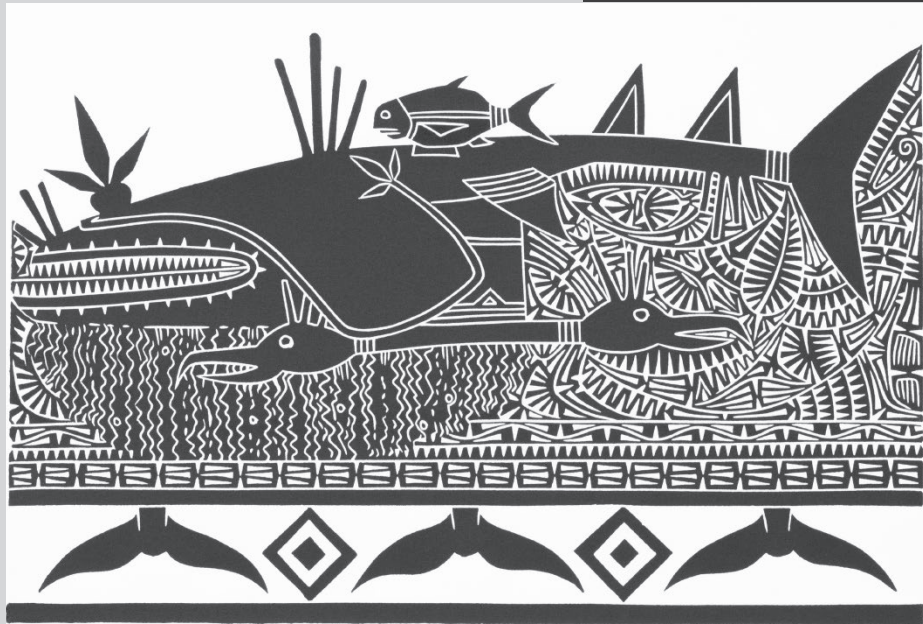
John Bellany

9 February – 8 April

Gippsland Performing Arts Centre, Level 1

This satellite exhibition is a glimpse into the world of the last artist John Bellany (1942 – 2013), one of the most prolific and acclaimed Scottish artists of his generation. A colourful selection from Latrobe Regional Gallery's permanent collection, these works were created in a period when Bellany was an Artist-in-Residence at the Victorian College of the Arts, Melbourne in 1983 and as a group, provide an important record of the spirit of this particular time. Combining allegory and speculative fictions, Bellany playfully attempts to capture the spirit of his curious characters rather than a true physical likeness, not unlike the disciplines of theatre and performance.

IMAGE: John Bellany, *Untitled (self portrait)*, 1983, Oil on canvas, 122 x 91 cm. Latrobe Regional Gallery Collection, Donated through the Australian Government's Cultural Gifts Program by Guy Abrahams, in memory of Christine Abrahams, in 2012.



LATROBE CITY ART SALON

Morwell Art Society, Traralgon and District Art Society, and Moe Art Society

17 May – 28 July

Gippsland Performing Arts Centre, Level 1

In the tradition of the salon exhibitions of yesteryear, where a myriad of artworks and people would be brought together, judged, and prized, *Latrobe City Art Salon* is a curated exhibition of works from Morwell Art Society, Traralgon and District Art Society, and Moe Art Society. This exhibition is a showcase of the talent and diverse art practice these groups promote, and a celebration of the creativity of the Latrobe City community.



GUIDED TOURS



SATELLITE EXHIBITIONS

**Last Wednesday of every month, 11am
GPAC, Foyer**

Join LRG curators for a guided tour of the exhibitions.

EXHIBITIONS

First Saturday of the month, 2pm:

- 2 March
- 6 April
- 4 May

Latrobe Regional Gallery, Foyer

Free public tour of the current exhibitions with one of our experienced tour guides.

Thursday 7 March, 10.30am

Latrobe Regional Gallery, Foyer

Free member-only tour with one of our curators.

PRIVATE TOURS

Book a private guided tour for your social, community or corporate group, led by our in-house curators and qualified guides. Available on request.

Please email: lrg@latrobe.vic.gov.au

EDUCATION TOURS

Explore LRG and its exhibitions with a guided tour for your primary, secondary or tertiary education group. Tailored to your year level and interests, tours are facilitated by our curatorial and gallery team. Visit the Schools and Learning page on our website to download your education kit. Designed to support teachers in the gallery or classroom, it allows you to select and adapt the questions and support materials to suit your desired learning experience.

LRG SHOP

Visit the LRG Shop and browse our wide range of works by local makers. Whether you are looking for a gift or something special to take home, we offer a curated selection of jewellery, art prints, books and home wares.

We support makers with sustainable practices and small businesses in Gippsland and Australia.

VENUE HIRE

Meeting rooms and art workshops are available for use at Latrobe Regional Gallery. Please contact the LRG Front Desk to find out more!

Telephone: 5128 5700

Email: lrg@latrobe.vic.gov.au



VOLUNTEERING AND MEMBERSHIPS

MEMBERSHIPS AT LRG

Be part of a passionate group of members who appreciate the arts in Gippsland.

As a member, you will enjoy invitations to events and opportunities to meet local artists, Gallery staff and like-minded art lovers. You will benefit from preferential prices to some of our programs and in our Gallery shop. Most importantly, you will be part of a community who supports the arts in our region. Join us!

To become a member, please contact LRG:

Telephone: 5128 5700

Email: lrg@latrobe.vic.gov.au

VOLUNTEERING AT LRG

Do you want to get involved?

Become a volunteer!

Volunteers play an important role in delivering programs such as tours or assisting with school visits. To register your interest email lrg@latrobe.vic.gov.au





**VISIT
US**

LATROBE REGIONAL GALLERY

Free entry
138 Commercial Road
Morwell 3840

03 5128 5700
latroberegionalgallery.com
facebook.com/LatrobeRegionalGallery
instagram.com/LatrobeRegionalGallery

Opening Hours:
Daily, 10am – 4pm

GIPPSLAND PERFORMING ARTS CENTRE

32 Kay Street
Traralgon 3844

03 5176 3333
gippslandpac.com.au
facebook.com/GippslandPAC
instagram.com/GippslandPAC

GPAC Box Office Hours:
Daily, 10am – 4pm

